

A.4083

A.4084

THE BEAK

THE BEAK DIAGNOSTIC

sapi med
SURGICAL
LINE

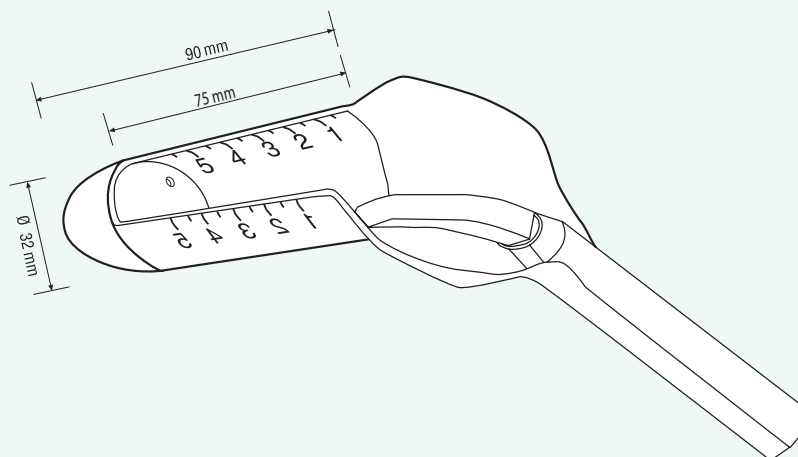


CE CE
0476

The proctoscopes **"The Beak"** are instruments with a uniquely innovative design feature. The closed, rounded tip allows for introduction of the scope directly into the anus, needing no separate introducer.

The proctoscopes **"The Beak"** offer the specialist the opportunity of clearly and satisfactorily exposing a portion (one fourth of the circumference) of the anal canal and rectal ampulla.

THE BEAK



REF A.4083 

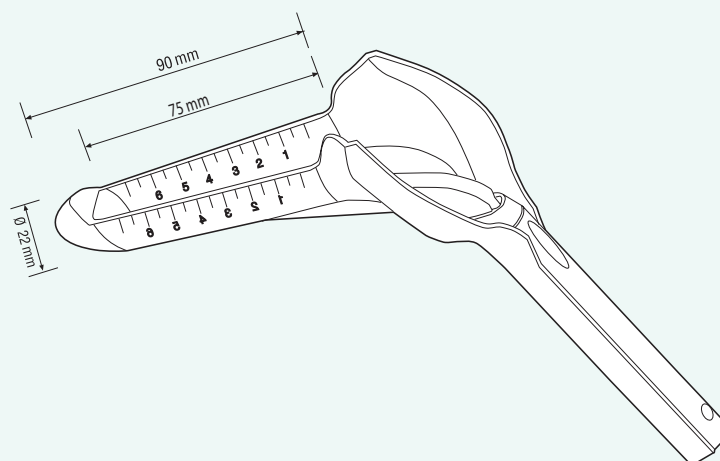
The Beak is a surgical silk-screened proctoscope with a full-length open channel through which anorectal procedures may be performed. Latex free. Disposable&sterile.

Sterilized by: ETO

Quantity per box: 25 pcs.

Also available in the LED self-lighting version **REF A.4083L**.

THE BEAK DIAGNOSTIC



REF A.4084NS 

The Beak Diagnostic is a silk-screened proctoscope with a full-length open channel. It is ideal instrument for visiting outpatient diagnostic. Latex free. Disposable.

Quantity per box: 25 pcs.

REF A.4084 

The Beak Diagnostic, disposable&sterile.

Sterilized by: ETO

Quantity per box: 25 pcs.

Also available in the LED self-lighting version **REF A.4084L**.